

# Neighbourhood

## News

From

**Hilmarton Parish**

Number 4 Volume 3 April 2011



Parish Council - St  
Laurence - The School  
Goatacre S&SC -  
HAGGIS- The Chapel -  
Monday Club -  
Goatacre & Hilmarton  
Film Clubs - Phoenix  
Group - Heritage Soci-  
ety - Gardening Club -  
Bell Ringers - Play  
Group - Goatacre  
Cricket Club - Smile -  
Toddler Group

**Beverbrook-Catcombe - Corton- Clewancy - Goatacre - Highway - Hilmarton - New Zealand - Witcomb**



### HILMARTON TODDLER GROUP

ARE HOLDING AN

### EASTER EGG HUNT

AROUND HILMARTON VILLAGE

FROM GOOD FRIDAY 22<sup>ND</sup> APRIL TO EASTER MONDAY 25<sup>TH</sup> APRIL

RAISING MONEY TOWARDS NEW TOYS AND EQUIPMENT FOR TODDLERS AND PLAYGROUP

COME AND SUPPORT YOUR LOCAL GROUPS AND HAVE A  
CRACKING TIME!

ENTRY FORMS CAN BE BOUGHT FROM PEARTREE COTTAGE, COMPTON  
ROAD, HILMARTON FROM 10AM GOOD FRIDAY

UNRAVEL THE PHRASE, RETURN YOUR FORM AND BE IN WITH A  
CHANCE TO WIN A PRIZE



### Hilmarton School Association

**80's Party Night Saturday 2nd April 8pm 'til late**

**Hilmarton School Hall**

Tickets are still available for Hilmarton School Association's **Flashback to the 80's** disco and party night. At just £5 each you can get on down to the sights and sounds of the 80's. So grab your legwarmers and hair gel, or get your shoulder pads out the wardrobe and have a Thriller of a night! Full bar is available and fancy dress is optional!

All money raised will go to Hilmarton School who need to replant and pave outside areas and create a quiet area for the children. For more information and tickets call Sian 07900 888027



Rob and Teresa at THE DUKE HOTEL, sponsors the printing of Neighbourhood News throughout 2011  
01249 760634 [www.duke-hotel.co.uk](http://www.duke-hotel.co.uk)

*Top quality dining from an extensive menu and comfortable en-suite accommodation in spacious modern rooms*

COMPTON ROAD AROUND 1950



**Our wonderful Postman Eric Lee** is retiring in May and we know lots of people would like to make a donation toward a gift to thank him for his work in getting the post to us on time and in all weathers over the years. If you would like to make a contribution please hand it to Adele at The Post Office or Val at Breda Cottage

**School Clothing Bank** in the School Hall Car Park that takes clean clothes, shoes, handbags etc if bagged. It saves residents from travelling to other re-cycling centres and brings in extra funds for school.

The church bells will be rung by visitors from north of Bristol on Monday 2nd May between 2.30 & 3.15. Best wishes. Ken Webb

**Line Dancing** in Hilmarton Church Hall 8.00 p.m. to 9.30 p.m. every Monday £3-50 call Linda Miller 01249 760381

PHOENIX GROUP

The April Phoenix Group Meeting is on Tuesday 12<sup>th</sup> April 2011 at 7.30pm in the Community Room Hilmarton. Tina Walker will be demonstration Easter egg decoration. If you would like to join in then please bring along a Chocolate Easter Egg.

Phoenix Group usually meet in the Community Room of Hilmarton School/Community Hall on the 2<sup>nd</sup> Tuesday of each month at 7.30pm (no meeting in August) only £15.00 for annual membership or £2.00 on the door for visitors, all are welcome. Under 18's pay half fee.  
For more information call Ruth 760205



**WHAT'S ON AT THE CHAPEL IN APRIL**

SUNDAY	3rd/10th/17th/24th	6:00pm	Worship	CONTACT
TUESDAY	5th	7:00pm	Knitti Natters	Joan Sparrow
WEDNESDAY	6th and 20th	2:00pm	Ladies Meeting	
THURSDAY	7th and 21st	10:00am	Smile Group	
FRIDAYS	1st/8th/15th/29th	2:30pm	Praise & Prayer	Everyone Welcome
	AT KATH SMITH'S	38 POYNDER	PLACE	HILMARTON

## Hilmarton Gardening Club

March wasn't a bad month, and at least I have managed to sow the sweet peas I bought from Gill Hazell last month – whether they grow and bloom is another matter!!

The speaker on Tuesday 26th April is Don Everitt from Backwell, near Bristol. His subject this time is Lilies and Summer Bulbs, he will also be bringing plants for sale, so if you have some spaces to fill do come along. The meeting starts at 7.30 pm, and doors will be open at 7pm. After the talk there will be refreshments and the raffle prizes will be drawn.

Membership is now due, £5 for the year; monthly meetings cost £2 if you are a member and £3 if you are a visitor. Our fund raising whist lunch is on Wednesday 6<sup>th</sup> April and on Saturday 14<sup>th</sup> May we shall be going on a subsidised coach trip to RHS Wisley. As the HGC is affiliated to the RHS the cost to members is only £10 for the coach. We welcome non-members to join us for this superb day out at the reduced rate of £23. Contact Sue Cowell 01249 760675 for more information on these events. Other trips out will be arranged during the rest of the year, including an evening visit to Cantax House in Lacock, The Bishops' Palace Garden, Wells and The Mill House in Wookey (a full day trip) and in the autumn Kew Gardens. We're a very friendly club and welcome visitors and prospective new members at all times. For further information phone Geoff Procter (Chairman) on 01249 760312.



## Sunday 12th June

### Traditional Summer Fair and Food Festival

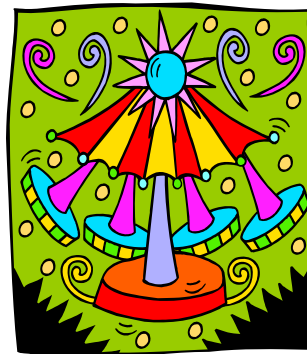
Sunday 12<sup>th</sup> June 1pm onwards Hilmarton School Fields and Hall

Hilmarton School Association is bringing back the village's Summer Fair and combining it with a Food Festival to showcase the fantastic range and diversity of food and produce that can be sourced locally.

The Summer Fair will incorporate all traditional aspects of a country fair with activities specifically aimed at children.



We would love to hear from any children's entertainers, wandering minstrels or bands that could help out and entertain on the day. Call Chrissie on 760229.



**Used Stamps and Postcards** - Do you have any old postcards or used stamps you wish to get rid of? In the Benefice of Woodhill we have joined with Wootton Bassett to co-ordinate collections of stamps and postcards which we can send off and help raise much needed funds for the Sudan Church Association. The postcards should still have their stamps attached to them. Stamps should be cut (or torn carefully) from their envelopes with generous surrounds.

Please put the stamps in Church when it is open, give them to Elaine Leighton or post through the door of 48 Poynder Place.



If you would like a personal message or advert included in the Neighbourhood News (space permitting), we ask you to please make a donation to one of the Parish Groups named on the front page. Please submit your request to the editors together with your donation, stating the group you support. For more information contact the editing team as below

NEIGHBOURHOOD NEWS-EDITING TEAM NOTES - **ITEMS FOR INCLUSION IN THE MAY EDITION BY 20th APRIL-**  
**PLEASE** TO : Jacquie Henly, Jays Cottage, Compton Road, Hilmarton 760401 jacquiehenly@aol.com - Geoff Procter, Breda Cottage, Church Road, Hilmarton 760312 valandgeoff@talktalk.net—Mel Wilkins melwilkins@btinternet.com.**FOR MORE NEWS & INFORMATION VISIT THE HILMARTON PARISH WEBSITE [www.hilmarton.org](http://www.hilmarton.org)**

## Easter - coming soon to a Church near you!

April is a busy time in the Church Calendar and do factor joining us for worship into your plans as Spring develops. The detailed schedule is below and there is a lot to choose from. From a family celebration of Mothering Sunday, the hosannas of Palm Sunday and the joy of Easter itself, through to the intimacy of Maundy Thursday, the prayerful simplicity of Night Prayer and the depth of Good Friday, there should be something for everybody.

There is a children's work shop on Saturday 16<sup>th</sup> April between 10am to 11:30am at Hilmar-ton Church Hall. This is open to primary school aged children, and please do get in touch with me to book your children their places (so we have enough resources for everybody). We will be particularly thinking about the first Palm Sunday and Jesus riding into Jerusalem on a donkey and it is sure to be good fun.

Again – can I particularly recommend the first service to mark Easter - which starts with a vigil and then the first communion of Easter on Saturday 23<sup>rd</sup> April at 9pm in St Lawrence Hilmar-ton. This really special service engages all the senses and the traditional elements. It includes lighting our special Easter candle from a bonfire and welcoming the resurrection in song, and celebration (please bring something with which to make a joyful noise).

With love in Christ, our risen Lord. Alison Way

Priest-in-charge, Benefice of Woodhill, The Rectory, Wood Street, Clyffe Pypard, Wilts, SN4 7PY  
[alisonway@tiscali.co.uk](mailto:alisonway@tiscali.co.uk), 01793 739044

Date	HILMARTON	Date	Other Benefice Churches
<b>Sunday 3<sup>rd</sup> April</b>	<b>11am Family Service</b> <i>Mothering Sunday</i>	Sunday 3 <sup>rd</sup> April	9.15am Family Communion, Clyffe Pypard 10.30am Family Service, Tockenham
<b>Wednesday 13<sup>th</sup> April</b>	<b>2pm Worship in the Week (in the Church)</b> <b>Communion</b> followed by tea & coffee <i>Passiontide</i>	Sunday 10 <sup>th</sup> April	8am Communion, Clyffe Pypard 9.15am Family Communion, Tockenham 11am Sung Communion, Broad Town
<b>Wednesday 13<sup>th</sup> April</b>	<b>8pm Night Prayer by Candlelight for Pas- siontide</b>	Mon 11 <sup>th</sup> Tues 12 <sup>th</sup> Fri 15 <sup>th</sup>	8pm Night Prayer in Tockenham 8pm Night Prayer in Broad Town 8pm Night Prayer in Clyffe Pypard
<b>Sunday 17<sup>th</sup> April</b>	<b>10.30am Benefice Communion and Palm Procession</b> <i>Palm Sunday</i>		
<b>Saturday 23<sup>rd</sup> April</b>	<b>9:00pm Vigil and First Communion of Easter</b> <i>Easter Eve</i>	Friday 22nd April	10:00am Family Service, Tockenham 2:00pm Music & Meditation, Clyffe Pypard
		Sunday 24 <sup>th</sup> April	8:00am Communion, Clyffe Pypard 9:15am Family Communion, Tockenham 11:00am Family Communion, Broad Town

**Library Bus** times. It will be at the School Hall Car Park on 11th. And 25th. April between 1.30 and 1.50pm.

Thank you to all on the flower rota. If anyone is interested in joining the Church flower team on a regular basis or just occasionally please contact Jasmine McFadzean on 760611.

**Enquiries about Baptisms, Weddings, Funerals or other special services to Rev'd Way, Lay Pastoral Assistant, Val Procter 760312 or Church Warden John Henly 760401**

# **Hilmarton And Goatacre Group Improving Safety**

Reporting to Hilmarton Parish Council

## March 2011 Newsletter

Since the last HAGGIS meeting a lot has happened so we thought the best way to communicate before the next meeting was by way of a newsletter.

**Road Safety CD**, *A Message from The Chairman, Calne Area Board and Roads Forum*, *30 MPH limit Review*, **Letter from Wiltshire Council Cabinet Member**, *E-mail to James Gray MP and response*, **The Follow Up**, *'White Gate' request from Derry Hill*, **Community Speed Watch**, *Traffic Surveys*, **Minutes of Meeting 9<sup>th</sup> February 2011**, *Time Date and Venue of next meeting*

### **Road Safety CD**

Great news, The National Lottery has awarded us £7500 to produce an interactive road safety CD. This is now in production and will be available to present to local authorities, societies and schools to promote the HAGGIS campaign for safer roads.

### **A Message from the Chairman, Calne Area Board and Roads Forum**

Richard Broadhead has decided to step down as Chairman so he may spend more time with the CAB and roads forum. He feels we will be better served as a group if he is an ordinary HAGGIS member. We are sure that the HAGGIS membership and members of the Parish Council would like to thank Richard for the hard work he has put in to set up the group and lead it through some difficult waters. We are also pleased he will remain in the group as a member

### **30 MPH limit Review**

Wednesday 26<sup>th</sup> January, Cabinet Member Dick Tonge, Highway Engineer Mark Stansby and a colleague with Cllr Christine Crisp came to visit Goatacre and Hilmarton in advance of making a decision regarding the 40 mph to 30 mph speed limit reduction.

### **Letter from Wiltshire Council Cabinet Member Speed Limit Review - A3102 Hilmarton and Goatacre**

I write to thank your Councillors Mr Procter and Mr Broadhead for meeting me on site recently to discuss the speed limit review. It was interesting to hear their views and to see the locations in person to enable me to gain a full understanding of the issues.

Unfortunately on this occasion I am unable to accede to the request to introduce 30mph speed limits in Hilmarton and Goatacre principally because the lengths of the A3102 in the villages do not meet the requirements for the number of frontage houses that is a pre requisite for a 30 mph limit.

I do however sympathise with the difficulties faced by pedestrians when seeking to cross the A3102 and would reiterate the advice given that crossing facilities be pursued through the Community Area Transport Group.

Your sincerely

R.L.Tonge

Cabinet Member for Highways and Transport

**E-mail to James Gray MP and response**

Dear James

**HAGGIS (Road Safety Group Hilmarton and Goatacre)A3102- Speed Limit**

You will know how desperately disappointed we are with the response from Cabinet Member for Highways and Transport, Mr Dick Tonge (see attached).

Although HAGGIS ( reporting to Hilmarton Parish Council) is a non political group we would say we were a prime example of 'The Big Society'. With very little funding (but much personal expenditure and time) and with the strong will of unpaid volunteers we have already achieved much in making Hilmarton and Goatacre a safer place for pedestrians and motorists, we were hoping for more support in return.

We would note that Dick Tonge is encouraging our bid for pedestrian refuges at both sites and we are happy to acknowledge this. I am attaching a resume of the case we made and the response from Mr Dick Tonge (we have not yet replied to his letter).

This is a tremendous blow against a growing team of very positive volunteers. It is said that the decision has been made based upon us not meeting the dwelling density requirements for the two stretches of road in question ( We are going to undertake a survey at both sites to see just how far short of these requirements we are).

We have no doubt there are enough mitigating services that would allow the Secretary of State to review and reconsider the ruling.(See our short report). We believe there are a number of similar situations where a 30 mph limit has been introduced e.g. Christian Malford (although we need to check this).

It was most unfortunate that on the very day of Dick Tonge visited us, Wiltshire Council had put in a traffic light system outside The Duke Hilmarton (for pot hole repair) so traffic speed was reduced considerably.

The two officers from Wiltshire Highways, in their reflective coats also greatly reduced the speed of traffic (High Visibility jackets are probably one of the most effective traffic calming measures, and we are currently working on another scheme where we may encourage more local people to make use of these, I hope to be able to tell you more of this project shortly).

We are pleased that The Calne Area Board has been glowing in their praise of the professional way HAGGIS conducts its business to the extent that we are being permitted to run our own traffic census at , not only, Hilmarton and Goatacre, and we have volunteered to carry out 'one day' surveys for other local parishes at no charge. The highway consultants Mouchel will charge £2000 per day for similar work. We are at a loss to know what to do next, and as our Member of Parliament we know we have your support, we now seek your advice. We have no doubt you will also bring this to the attention of Secretary of State for Transport Mr Philip Hammond.

Thank you again for your help.

Kind regards

Geoff

Geoff Procter

Hon Sec HAGGIS

PS Although the subject is not mentioned , there is a strong feeling amongst members, that decisions such as this (although declined following reference the Highway guidelines) are influenced by the consideration of the potential cost of such a project.

We have already shown (with the white gates) that we can kind find our own money from private sources. Only 50% of the cost of the gates was provided directly by Wiltshire Council (Calne Area Board). The balance came from private donations from local residents, Arkells Brewery, Westlea Housing and by the positive support of gate manufacturers JACS(UK)Ltd of Melksham by allowing us to come up with the design and for them to produce the gates in kit form for us to build.

### **James Gray's response**

Dear Geoff,

Thank you for your email, and I do of course know of the strong case you advance for a 30MPH Speed limit in Hilmarton and Goatacre, and can understand your disappointment at Dick Tonge's declining to consider it because of the number of dwellings which actually border the road.

However I fear that the best advice I can give you is that there is no-one other than Wiltshire Council who could bring this about. It would be quite wrong if I wrote to Philip Hammond on the subject, since he has no responsibility for local decisions of this kind. He would merely refer us back to Wilshire Council. So the only option you have is work with Dick and the Council in continuing to try to convince them of your case. I am copying him in to this reply to your email. I know that you may find this disappointing, but feel it only right that I should give you straightforward and honest advice on the subject. I hope that you understand.

Kind regards,

James

### **Hon. Secretary's reply:**

Dear James

Thank you for your swift reply, we will continue our campaign.

Kind regards

Geoff

### **The Follow Up**

George Hudson and Geoff Procter are putting responses together to send to Cllr Dick Tonge and James Gray MP, this is well under way.

### **'White Gate' request from Derry Hill**

We have had a request from Derry Hill to advise them how they should go about obtaining White Gates, A letter has been sent (copy available on request).

### **Community Speed Watch**

Now the better weather has arrived a timetable of events will be prepared. Richard Broadhead is handing his role as CSW co-ordinator to Mel Wilkins.

### **Traffic Surveys**

It would seem that the professional methods of traffic surveys carried out by HAGGIS have been accepted by the CAB and they are prepared to allow us to produce surveys in other areas for other groups, which will continue to put us in a good light with Wiltshire Council.

### **Minutes of Meeting 9<sup>th</sup> February 2011**

The meeting minutes from 9/02/2011 are available on request in hard copy or E-mail [haggis30@hotmail.co.uk](mailto:haggis30@hotmail.co.uk)

### **Time Date and Venue for next meeting**

Thursday 14<sup>th</sup> at 7.30 April (Hilmarton Community Room, Poynder Place)